

BOOMS

- Standard boom reach: 8.02 m
- Main boom structure: 203 mm x 254 mm high tensile steel
- Stick boom structure: Rectangular high tensile steel.
- Boom pivot points: 76 mm heat treated and chromed pins mounted on bronze bushings
- 2 work lights 25W on each side of the stick boom

OPTIONS

- Hydraulic heel boom for tree length wood
- Dead heel boom for tree length wood
- Telescopic boom reaching 9.70 m
- Bent boom for compact parking position

CYLINDERS

ROTOBEEC design and fabrication with wear ring, chromed rods made of induction heat treated steel

- Main boom cylinder: 7" (178 mm) bore x 42.25" (1073 mm) stroke x 3.5" (89 mm) rod
- Stick boom cylinder: 6" (152 mm) bore x 38.25" (972 mm) stroke x 3" (76 mm) rod
- Optional cylinder protectors

SWING SYSTEM

- Continuous rotation with cross roller slewing ring 970 mm O.D.
- Dual swing motors 780 cc and reducing gearbox
- Load sensing directional valve
- Actual rotation torque estimated at 33,385 Nm

CAB

- Dimensions: 1219 mm x 1524 mm
- Isolated, mounted on rubber shockproof frame
- Roof window, sliding side windows, with tinted glass on all windows.
- Fan
- Windshield wiper and washer
- 2 x 55W halogen lights

OPTIONS

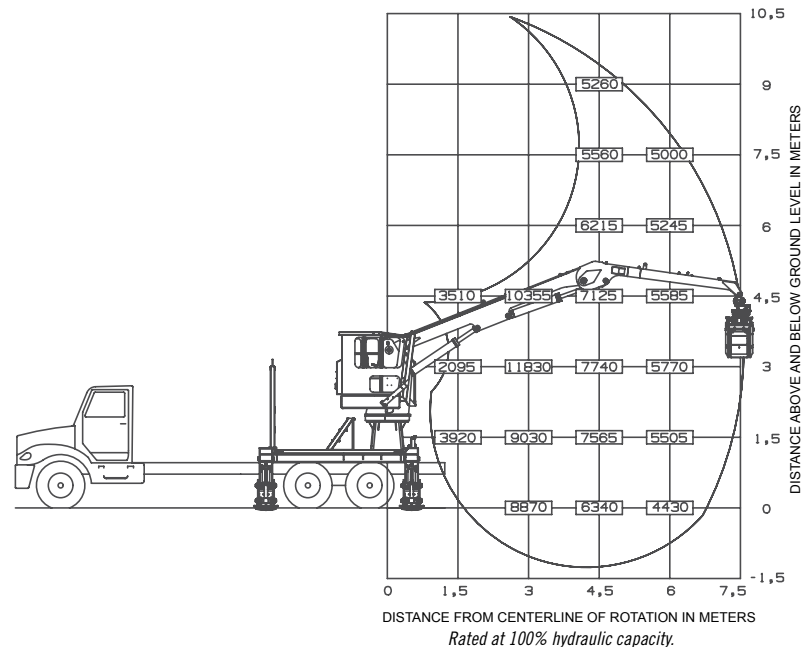
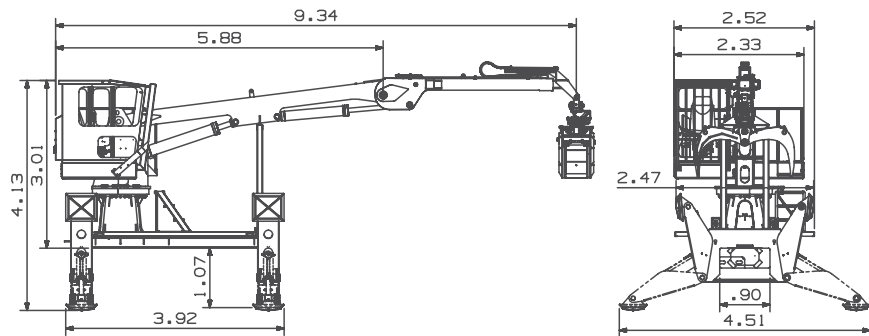
- Hydraulic heel boom for tree length wood
- Heater
- Air conditioner
- Front windshield guard
- Cab extension (305 mm) wider on right side
- AM/FM radio
- CB radio

HYDRAULIC SYSTEM

- Triple gear pump
- High pressure system 3,200 psi

MISCELLANEOUS

- Weight with standard equipment estimated to 7700 kg (not including attachment)
- Available with various attachments for handling logs, scrap or bulk materials.



OPTIMAX LOADER ALSO AVAILABLE IN STATIONARY MOUNT CONFIGURATION.

DISTRIBUTED / SERVICED BY:

We reserve the right to change specifications and improve our products without notice or obligation.

OPTIMAX™

PTO DRIVEN LOADER

- **Heavy-Duty Construction**
- Simple **motorless** design (PTO Driven)
 - Lower initial and operating cost
- Great **Swing Torque**
- **Smooth and Comfortable** operation
- Excellent **fuel economy**



Expressions Grafik • Printed in Canada V.20120305.E-metric

OPTIMAX

PTO DRIVEN LOADER

IDEAL FOR HANDLING

- Logs
- Scrap Metal
- Waste
- Bulk materials

ADVANTAGES

- Low maintenance loader. No additional engine to maintain.
- Standard truck power plant, serviceable everywhere.
- 50% less parts required for engines maintenance.
- 50% less risk of breakdown.
- Quieter operation.
- Excellent fuel economy.

OPTIMAX LOADER ALSO AVAILABLE IN STATIONARY MOUNT CONFIGURATION.

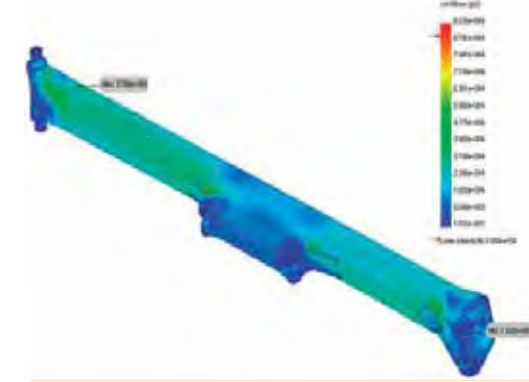


FEATURES AND BENEFITS



1 SPACIOUS AND ERGONOMIC CAB

- All-season comfort with optional heating and air conditioning systems
- View through overhead allows operator to precisely manoeuvre the loads
- Intuitive controls located at easy-reach



2 PRECISE ENGINEERING AND FABRICATION

- Design carefully studied to provide maximal lifting capacities at any position
- High strength steel construction eliminates risks of structural failures
- Premium quality hydraulic and mechanical components ensure productive, smooth and safe operation



3 POWERFUL SWING SYSTEM

- Full 360° continuous rotation
- Dual swing motors provide high starting and stopping torque



4 EXTRA-WIDE STABILIZERS

- Independently controlled to adapt to all conditions
- Superior stability for peace-of mind operation



5 HIGH QUALITY HYDRAULIC CYLINDERS

- Designed, built and tested by ROTOBEC
- Bolt-on heads
- Oversized wall barrels
- Sealed spiral cut bronze / aluminum bushings with seals help keep grease in and dirt / dust out
- High pressure capability



6 PINS AND BUSHINGS

- Oversized, chromed and hardened booms and cylinder pins
- Sealed bronze bushing for extended greasing intervals in tough environments

